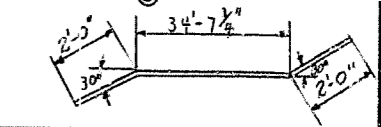


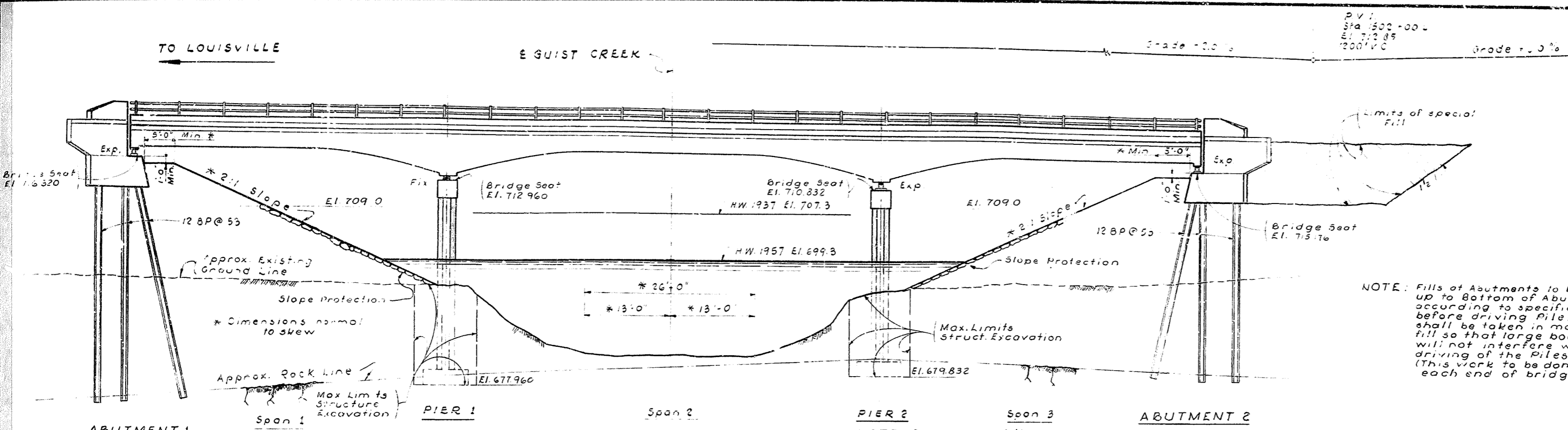
FED. ROAD DIST.	STATE	FED. AID PROJ. NO.	FISCAL YEAR	SHEET NO.	TOTAL SHEETS
7	KY.	1-04-361			

BILL OF INCIDENTAL MATERIAL					
ITEM	No.	DESCRIPTION	LOCATION		
Preamolded Exp. Jt. Filler	4	1'-0" x 1/2" x 7'-0"	Abutments 1 & 2		
"	2	12-3/4" x 1" x 4'-5 1/2"	Abut. Between Curbs		
"	1	5'-0" x 1" x 34'-7 1/2"	Abut. (Parapet Wall)		
Copper Strip	1				



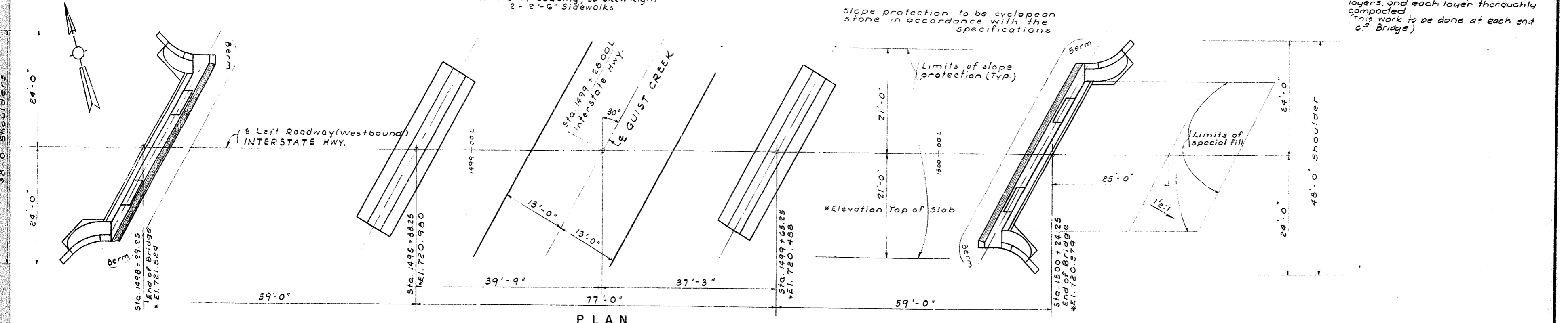
NOTE: Fills of Abutments to be built up to bottom of Abutment according to specifications before driving Piles. Care shall be taken in making fill so that large boulders will not interfere with the driving of the Piles. (This work to be done at each end of bridge.)

NOTE: The Fill Material within limits shown hereon shall be sand & gravel, free from animal or vegetable matter or rubbish combined in proportions approved by the engineer. This material shall be deposited in 2 ft. layers, and each layer thoroughly compacted. (This work to be done at each end of Bridge.)



ELEVATION
 55'-11\"/>

NOTE: Build & Backfill Piers 1 & 2 before making fill of Abutments.



PLAN

GENERAL NOTES:

Specifications: Kentucky Department of Highways, 1956 Specifications with Amendments
 Design Loading: H20-S16-44 as specified in A.A.S.H.O. 1957 Specifications or alternate loading of two axles four feet apart with each axle weighing 24,000 lbs., whichever gives the greater stress.
 Concrete: Class 'A' Concrete to be used throughout.
 Reinforcement: Dimensions from face of concrete to bars are clear distances unless otherwise shown. Dimensions for bar spacing are distances center to center of bars.
 Elevation Edges: All exposed edges to be beveled & unless otherwise noted.
 Bill of Incidental Material: Quantities given in the Bill of Incidental Material are approximate only and the contractor is responsible for furnishing enough material to complete the work in accordance with the plans and specifications.
 Design Stresses: f_c 1200psi, f_s 2000psi, n=10, Foundation Pressure 20,000psi. Approach Pavement 24' Roadway Shoulders 48'.
 Piles: Piles are to be driven to rock or to sustain a load of 30 tons. Test piles shall be accurately located so as to be used in the finished structure for location of test piles see Sheet No. 13.
 Expansion Jt. Material: The cost of these items shall be included in the price bid for Class A Concrete.
 (Copper Strip 4')
 For Paper:
 False Work: To be commensal grade for paper or roofing felt approximately 1/2\"/>

Standard Drawing References:
 R-17
 ED-1
 SS-1
 H-110
 G-351
 SF-1

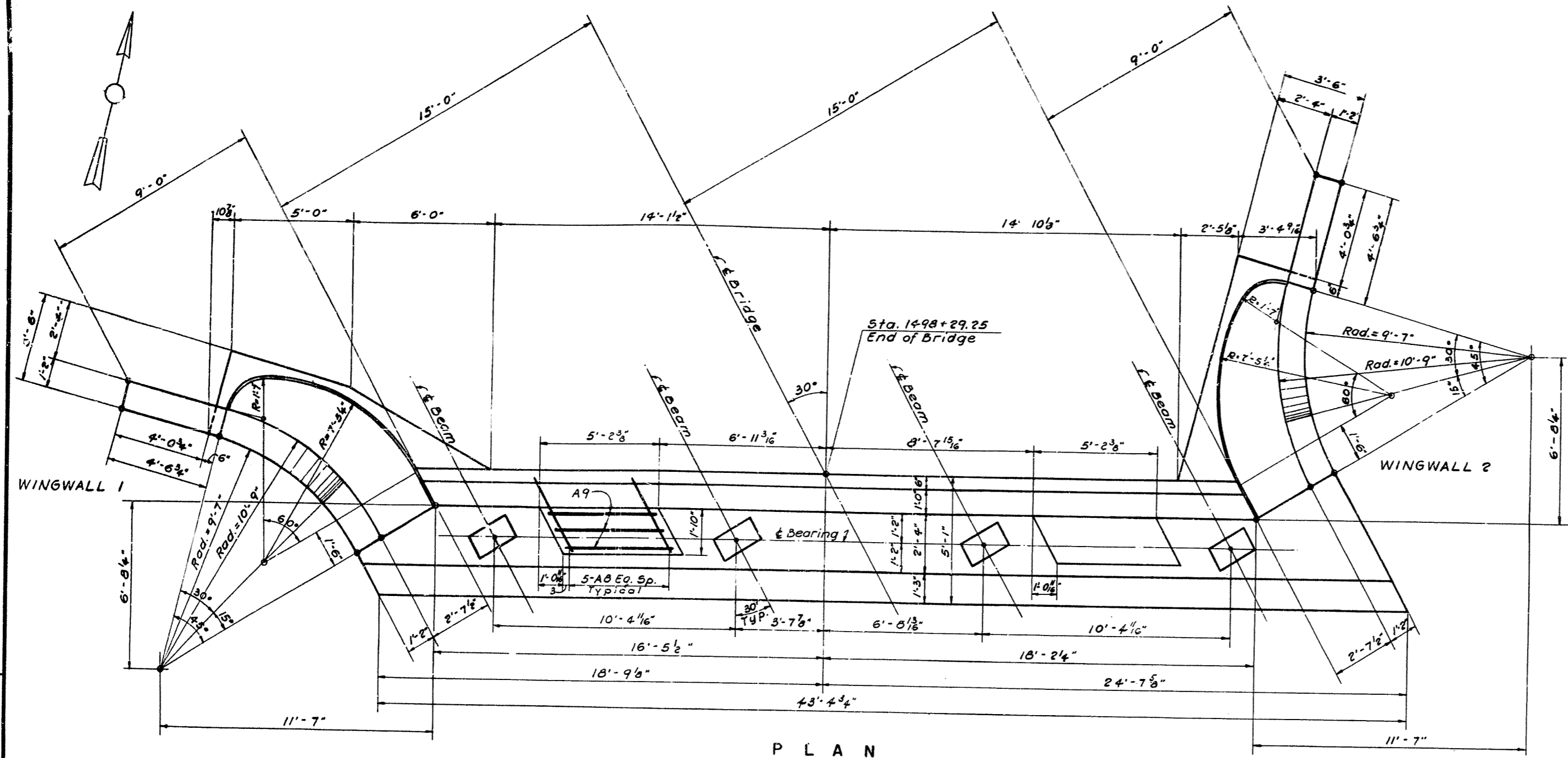
REFERENCES AND ESTIMATE OF QUANTITIES													
ITEM	SHEET No.	CONCRETE CLASS 'A' CU. YDS.	REINFORCEMENT LBS.	ALUMINUM HANDRAIL L.F.	STRUCT. STEEL APPROX. WT. LBS.	STRUCT. EXCAVATION		12\"/>					
						COMMON CU. YDS.	SOLID ROCK CU. YDS.	FURNISHING LIN. FT.	DRIVING LIN. FT.	Slope P-3000 Fill Material Sq. Yds.	Special 6\"/>		
Layout Sheet	1												
Abutment 1	2,3	70.5	5,886					600	600		441	15	15
Pier 1	4	100.1	12,900			231	24			164			
Pier 2	4	91.9	8,873			175	48			141			
Abutment 2	5,6	71.2	5,886					600	600		441	15	15
Spans 1-2-3	7,8,9,10,11	409.2	124,030	390.0									
Constr. Elevations	12		123,923										
Exp. Devices & Shoes	SS-1, ED-1				1315.3								
Handrail	H-110												
Soundings	15												
Pile Record	13												
Anchor Bolt Plan	14												
Totals		743.1	157,575	390.0	1315.3	406	72	1200	1200	308	882	30	30

COMMONWEALTH OF KENTUCKY
 DEPARTMENT OF HIGHWAYS
 FRANKFORT
 COUNTY OF
 SHELBY
 LOUISVILLE - LEXINGTON

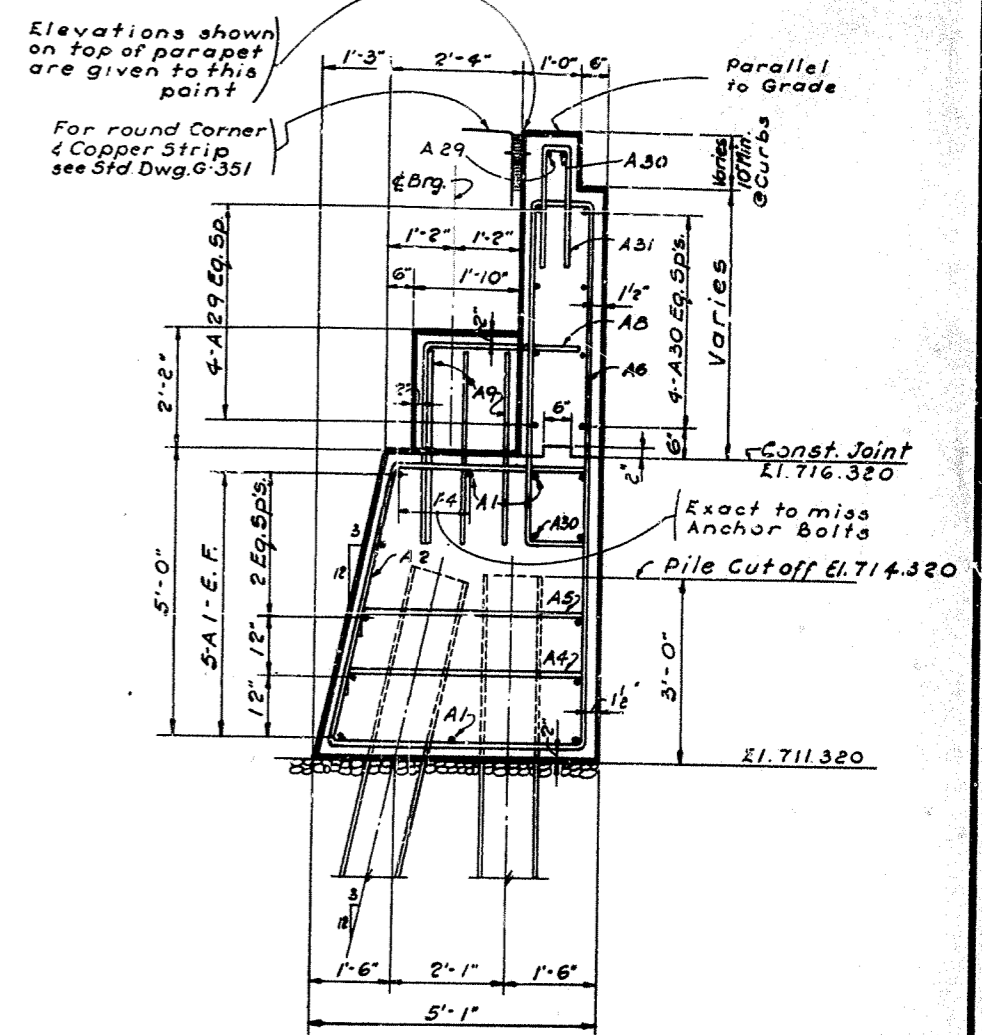
ROAD
 STATION 1499+2625 INTERSTATE PROJECT NO. SA 106-006
 BRIDGE NUMBER 106-806-6 DRAWING NO. 13797

Bill of Incidental Material S.S. DATE 1/15/56
 SHEET NO. 13 OF 15
 DATE 1/15/56
 CHECKED BY L.S. DATE 1/15/56
 DRAWN BY L.S. DATE 1/15/56

PROJ. NO.	DATE	REV. NO.	BY	CHKD.	TOTAL SHEETS
7	KY.	100-301			



PLAN

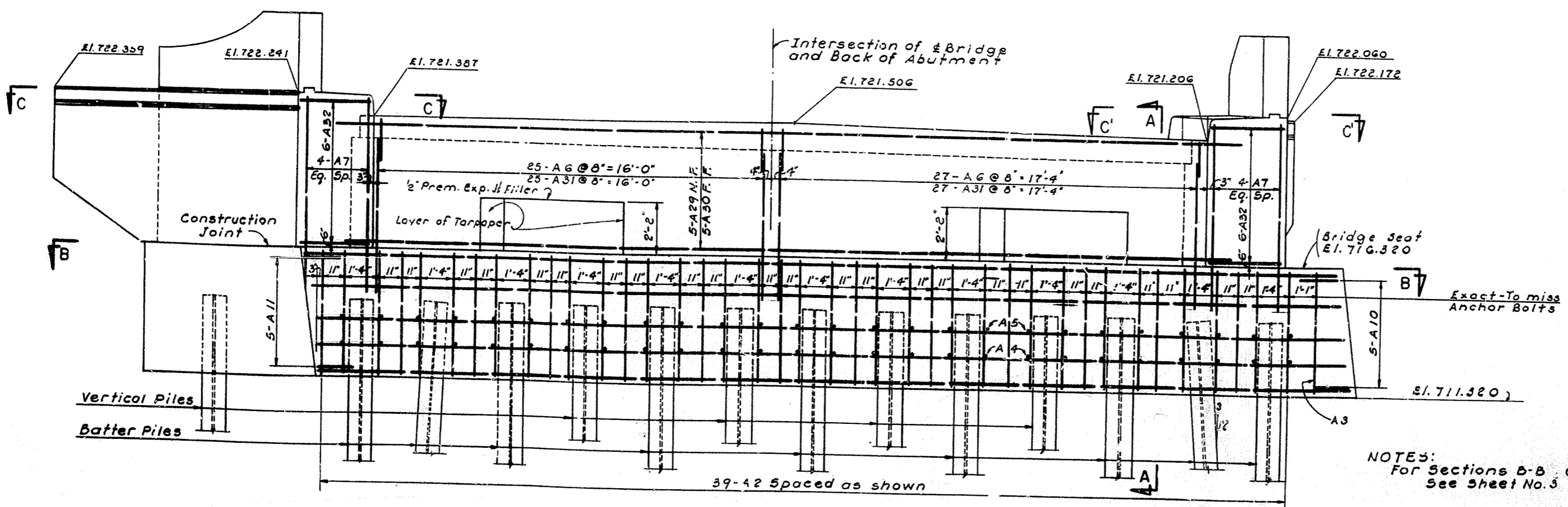


SECTION A-A

Note: Dress subgrade to 2' below plan elevation for bottom of concrete cap. Add a 2" layer of #6 crushed stone or gravel and tamp this 1 1/2" into the subgrade. Place 1:2 concrete mortar up to the bottom of cap elevation. Side forms for cap may be set as soon as mortar has set a sufficient time to support men or forms without being disturbed.

These layers of stone and mortar are to be used along bottom of cap instead of forms and are considered as incidental material in lieu of bottom forms. This method of construction is used as otherwise, if bottom forms were used, the subgrade would be disturbed and improperly back filled after completion of the concrete cap.

The cost of this item to be included in the unit price bid for Class 'A' concrete.



ELEVATION

NOTES:
For Sections B-B, C-C & C'-C'
See Sheet No. 3

ABUTMENT No. 1

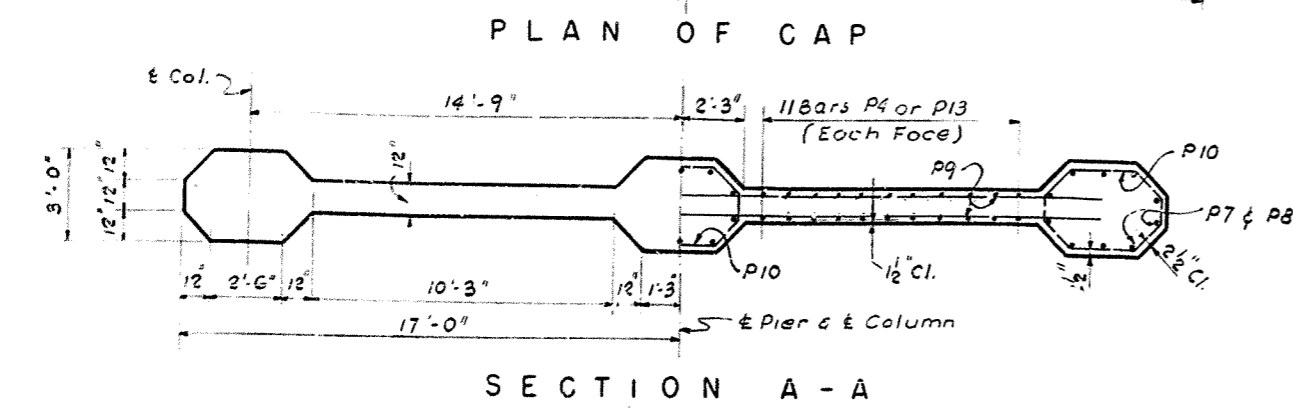
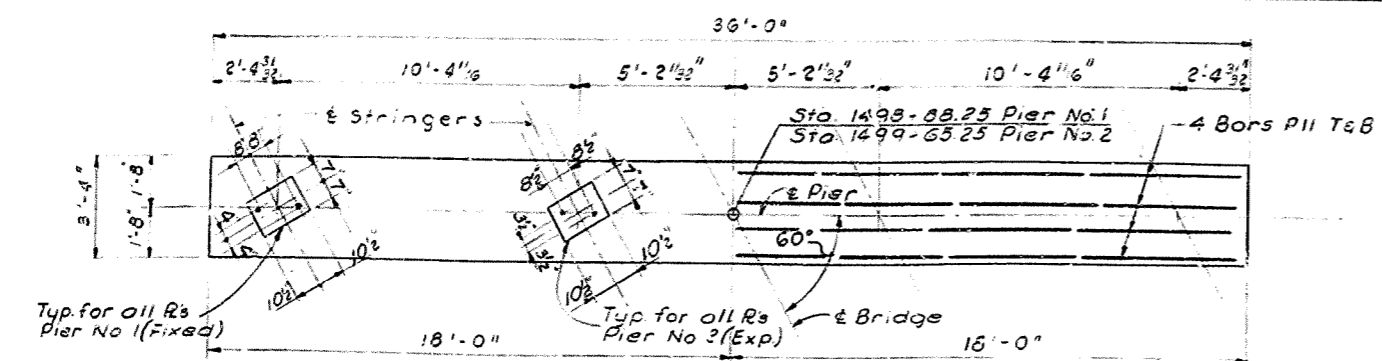
DESIGNED BY	DATE	CHECKED BY	DATE
BY	DATE	BY	DATE
BY	DATE	BY	DATE
BY	DATE	BY	DATE

GUIST CREEK CROSSING (WESTBOUND RDWY) Sheet 2

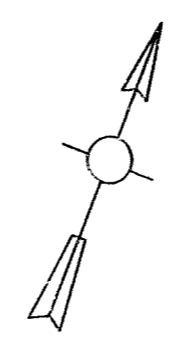
COMMONWEALTH OF KENTUCKY
 DEPARTMENT OF HIGHWAYS
 FRANKFORT
 COUNTY OF
 SHELBY
 LOUISVILLE - LEXINGTON

ROAD
 STATION 1494+26.75L INTERSTATE PROJECT NO. S.P. 106-306-LR

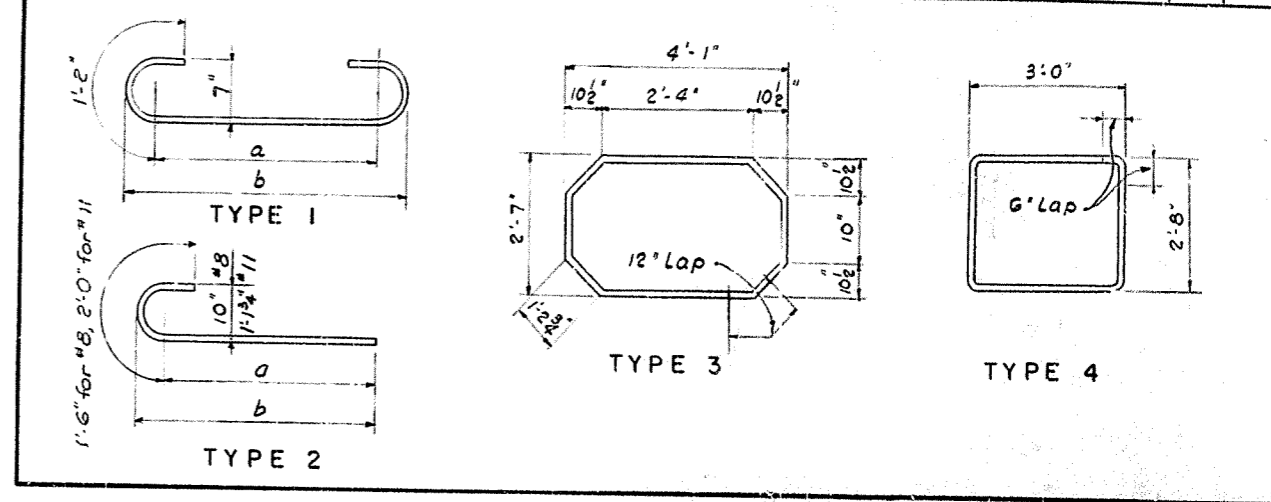
BRIDGE NUMBER
 No. 13797



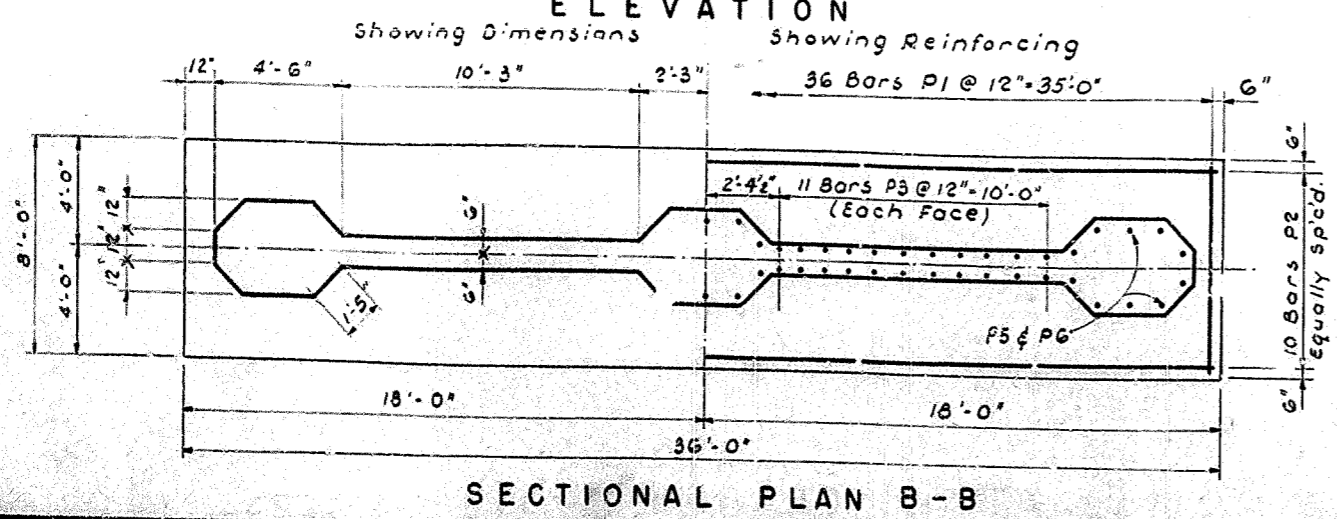
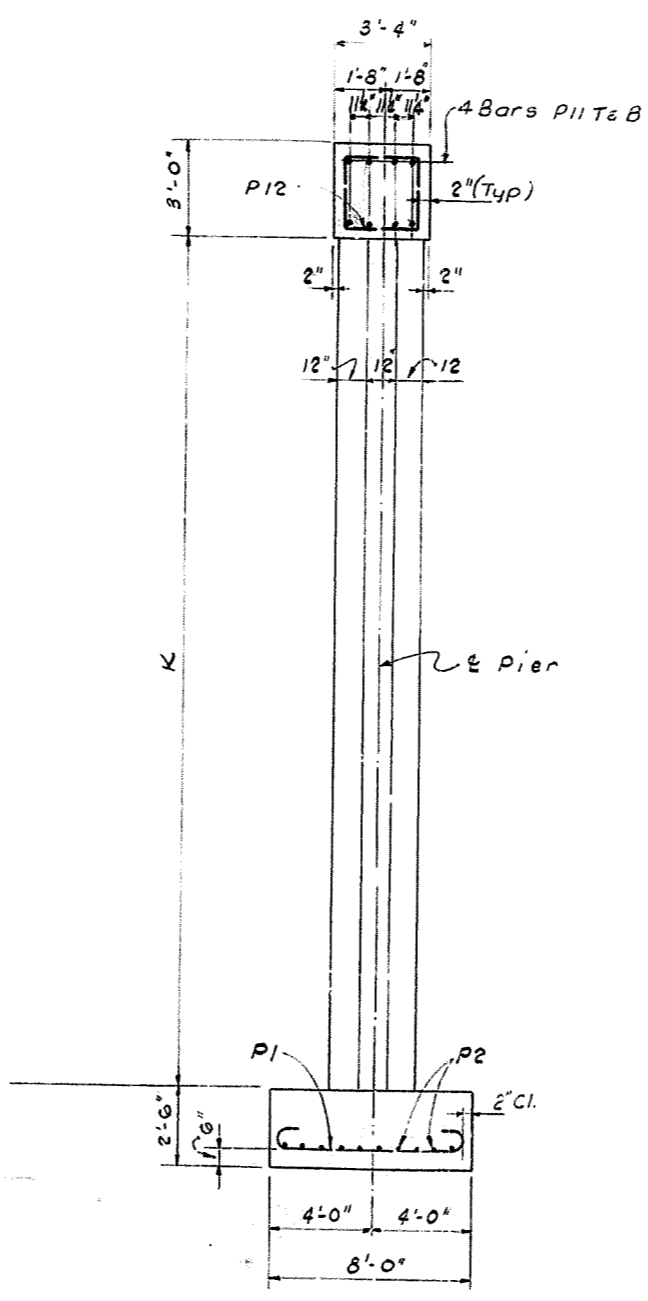
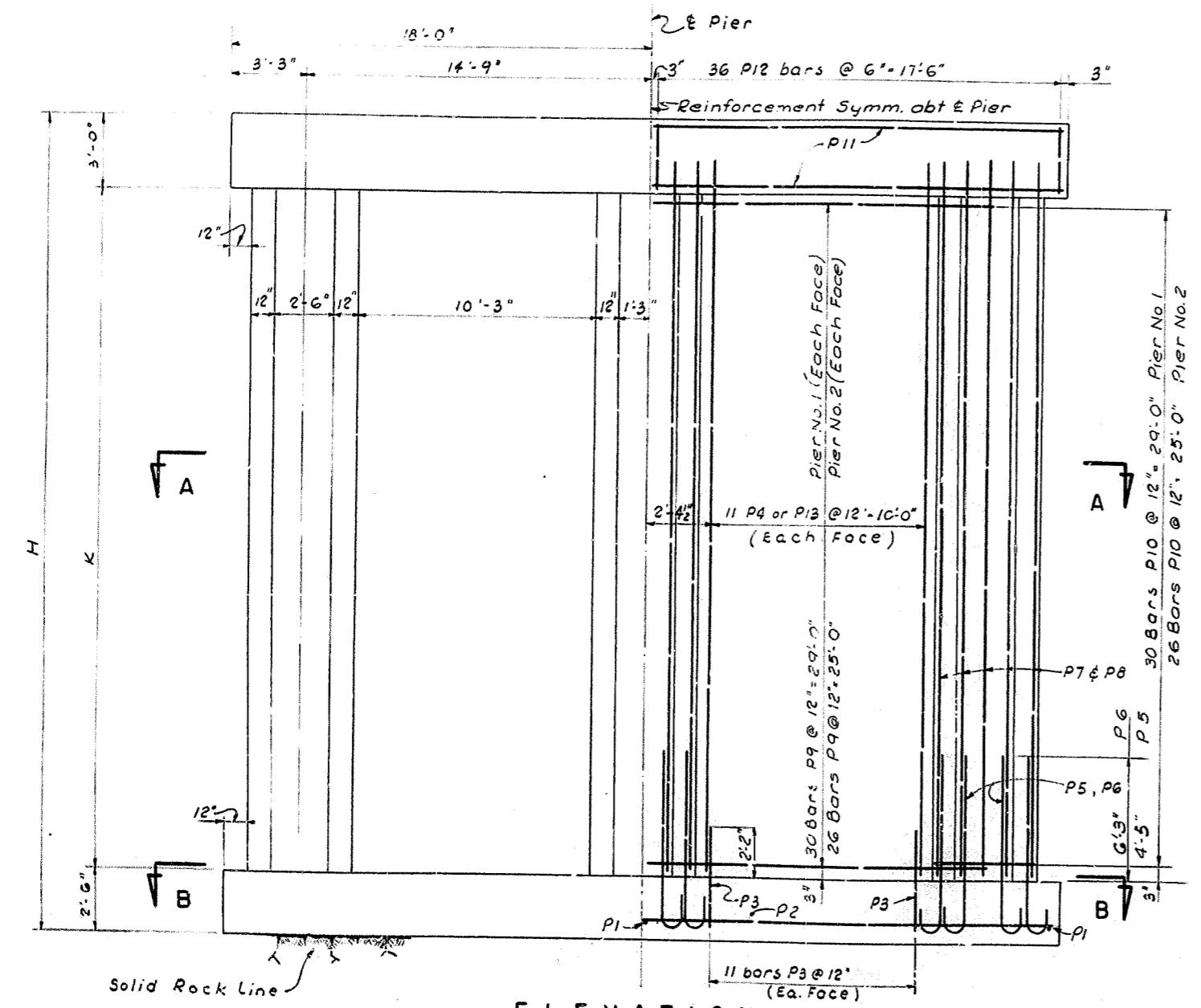
NOTE: Contractor shall exercise care in placing reinforcing bars in cap so as not to interfere with the drilling of holes for anchor dowels.



MARK	TYPE	NUMBER		SIZE	LENGTH Ft. In.	LOCATION	a		b	
		PIER No. 1 (Fixed)	PIER No. 2 (Exp.)				Ft.	In.	Ft.	In.
P1	1	36	36	7	9 5	Footing				
P2	Str.	10	10	4	35 8	Footing	7	1	7	8
P3	Str.	44	44	4	4 2	Web Wall Dowels				
P4	Str.	44		4	31 6	Web Wall				
P5	2		30	8	7 6	Column Dowels	6	0	6	5
P6	2	30		11	9 8	Column Dowels	7	8	8	2 8
P7	Str.		30	8	27 6	Columns				
P8	Str.		30	11	31 6	Columns				
P9	Str.	60	52	5	29 0	Web Wall				
P10	3	90	78	5	12 0	Column Hoops				
P11	Str.	8	8	8	35 8	Cap				
P12	4	72		5	12 1	Cap Hoops				
P13	Str.		44	4	27 6	Web Wall				



PIER	H	K	ELEVATION TOP OF CAP	ELEV. BOTTOM OF FOOTING	CONC. CLASS 'A' CU. YDS.	REINFORCEMENT LBS
No. 1 (Fixed)	35'-0"	29'-6"	712.960	677.960	100.1	12,900
No. 2 (Exp.)	31'-0"	25'-6"	710.832	679.832	91.9	8,873



DESIGNED BY: M.K. CHECKED BY: M.K. DATE: 1/15/52
 DRAWN BY: M.K. CHECKED BY: M.K. DATE: 1/15/52
 REVISIONS:

PIER NOS. 1 & 2

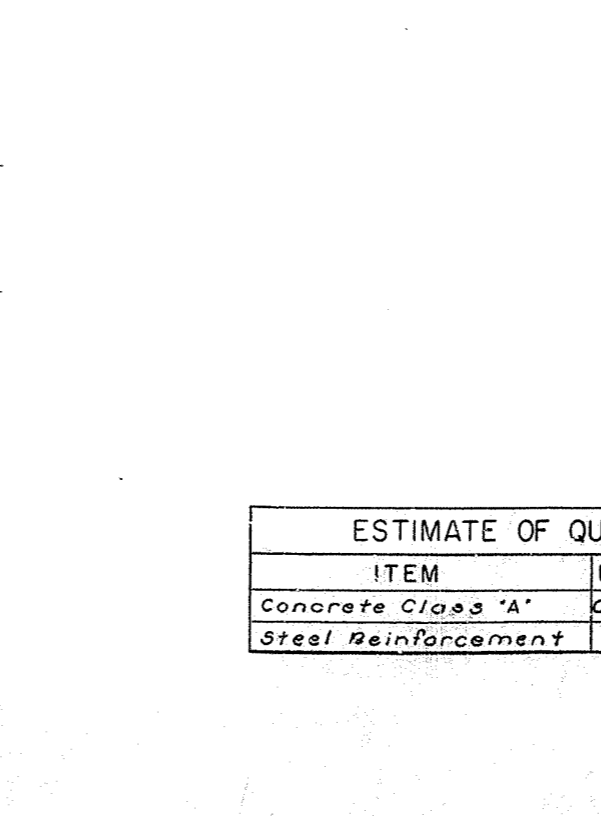
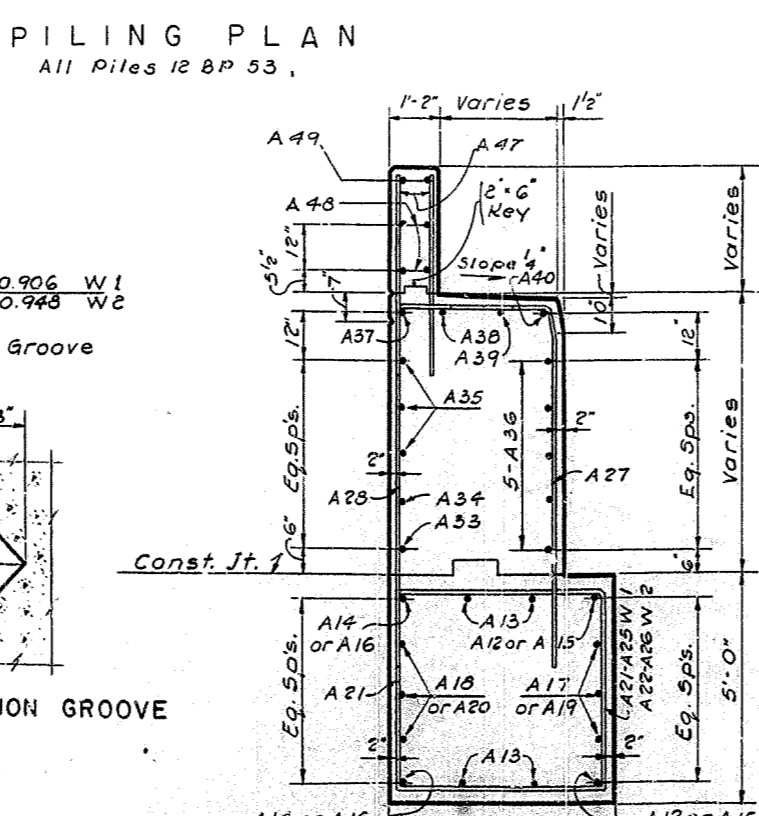
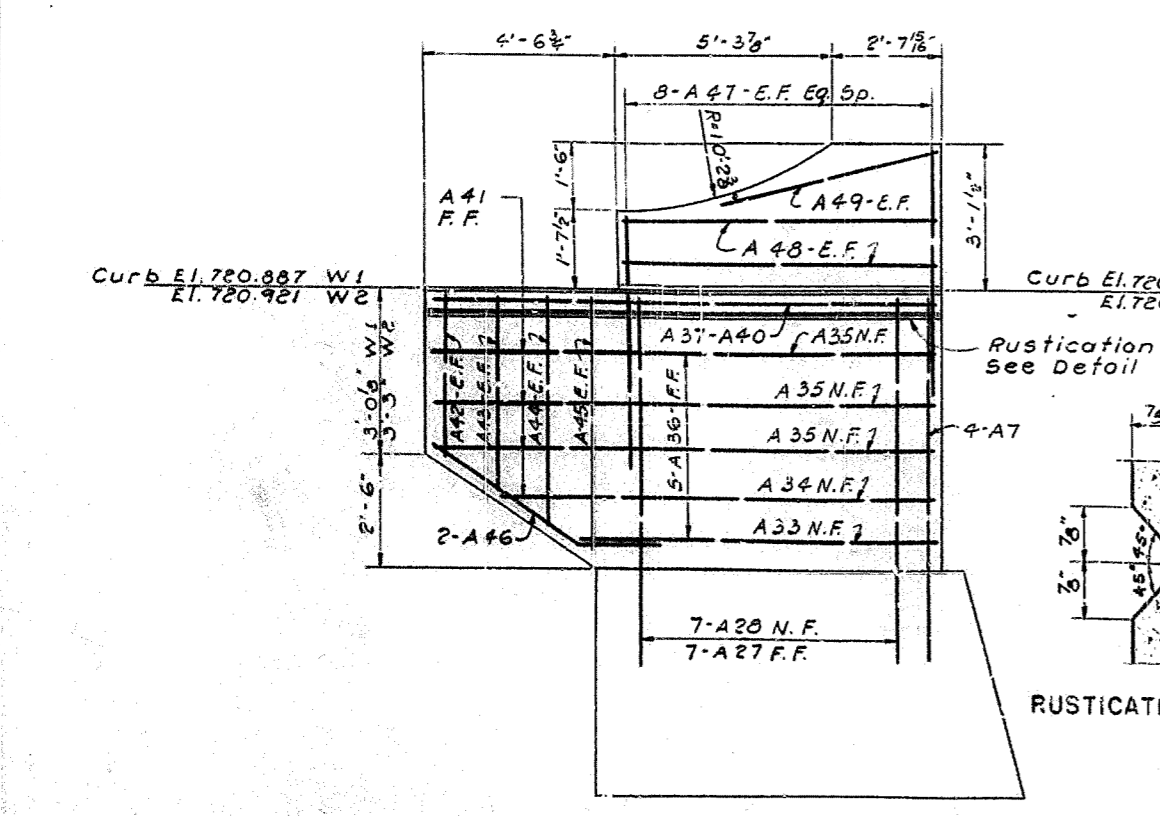
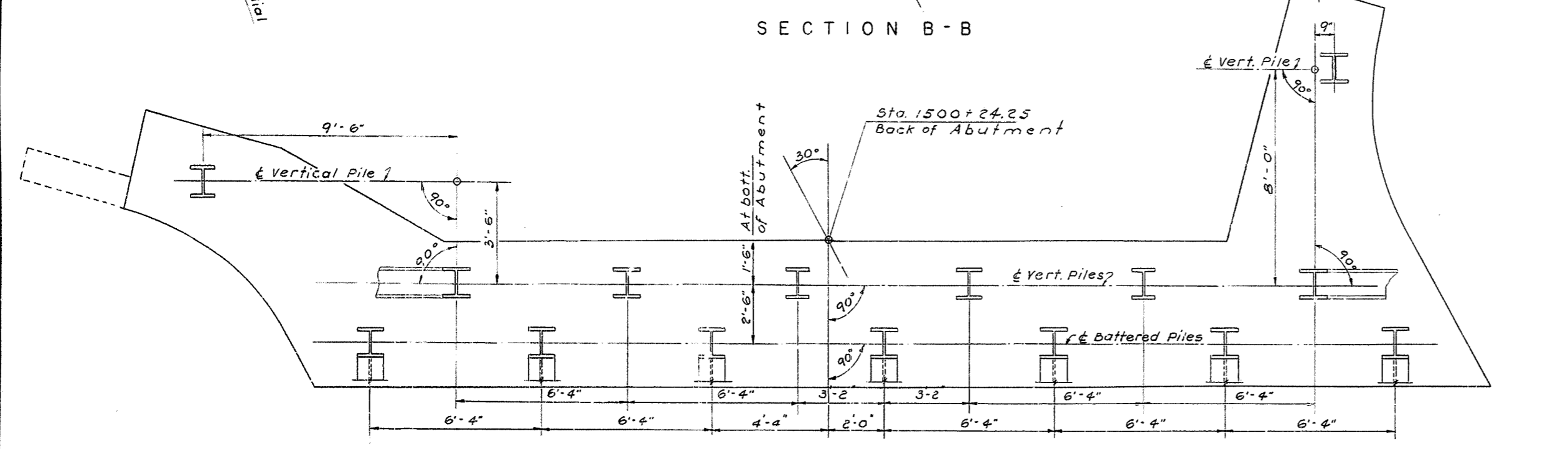
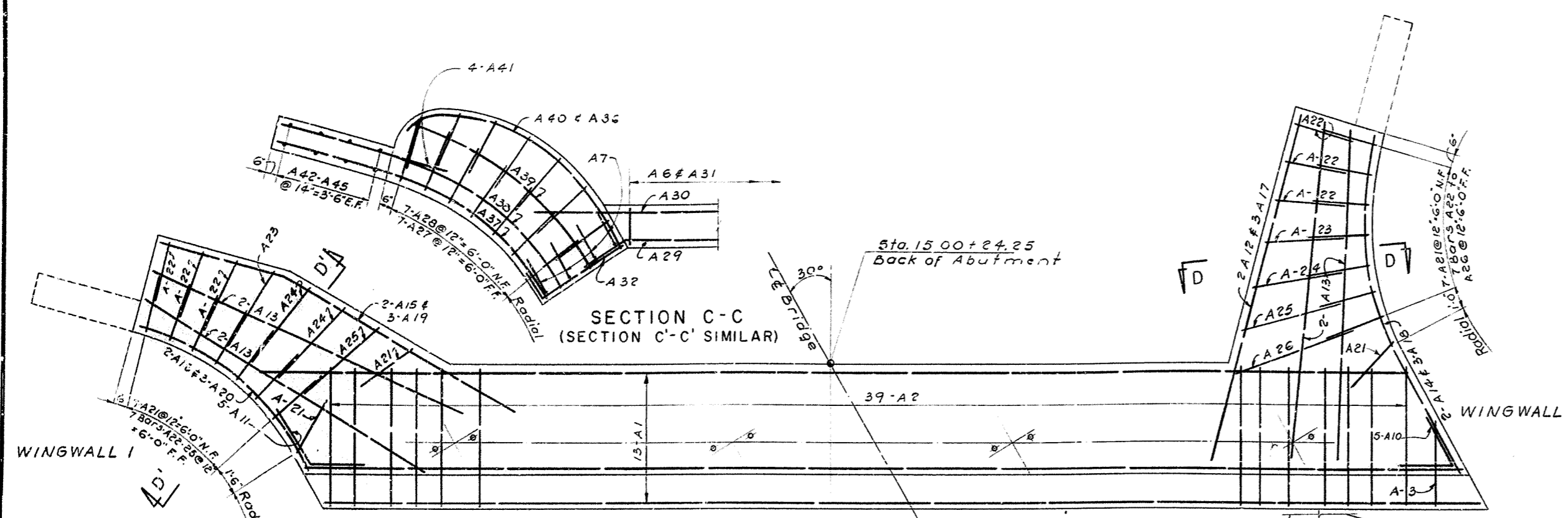
GUIST CREEK CROSSING (WESTBOUND RDWY.) Sheet 9

COMMONWEALTH OF KENTUCKY
 DEPARTMENT OF HIGHWAYS
 FRANKFORT
 COUNTY OF
 SHELBY
 LOUISVILLE - LEXINGTON

ROAD

STATION 1499+26.75 INTERSTAT. PROJECT NO. SR 106-806-L2

BRIDGE NUMBER: 13797



MARK	TYPE	NO.	SIZE	LENGTH	LOCATION	DETAIL			
						a	b	c	d
A1	Str.	13	6 #3	0	Abut.-Cap				
A2	1	39	5 #8	3		5	4	0	
A3	1	19	7			1	7	2	9
A4	4	26	4 #9			4	5	0	3
A5	4	26	4 #6		Abut.-Cap	4	2	0	3
A6	2	52	14 #3		Parapet	5	6	1	3
A7	3	8	9 #2		Wings-Wi&W2	7	9	1	6
A8	3	10	7 #1		Key	3	9	3	5
A9	4	6	11 #5		Key	4	9	3	5
A10	5	5	4 #5		Abut.-Cap	2	0	2	6
A11	6	5	5 #5		Abut.-Cap	2	0	2	6
A12	Str.	2	8 #12	0	W2 - Haunch				
A13	Str.	8	8 #11	6	W1&W2-Haunch				
A14	9	2	8 #12	0	W2 - Haunch	4	0	8	0
A15	6	2	8 #14	10	W1 -	10	0	4	10
A16	9	2	8 #8	6	W1 -	0	6	8	0
A17	Str.	3	5 #12	0	W2 -				
A18	9	3	12 #10		W2 -	4	0	8	0
A19	6	3	14 #10		W1 -	10	0	4	10
A20	9	3	8 #8		W1 -	0	6	8	0
A21	4	17	8 #6		W1&W2	4	8	2	0
A22	4	6	10 #6			4	8	3	0
A23	4	2	11 #2			4	8	3	4
A24	4	3	12 #6			4	8	4	0
A25	4	2	13 #10		W1&W2	4	8	4	8
A26	4	1	15 #6		W2 - Haunch	4	8	5	6
A27	7	14	10 #1		Wings W1&W2	2	4	8	0
A28	3	14	10 #3		Wings W1&W2	2	4	8	0
A29	8	5	37 #7		Parapet				
A30	Str.	5	38 #0		Parapet				
A31	4	52	5 #9		Parapet	0	9	2	7
A32	3	12	4 #10		Wings-W1&W2	3	5	1	6
A33	10	2	7 #9			7	9	7	6
A34	9	2	10 #1			2	6	7	7
A35	9	6	11 #11			4	4	7	7
A36	9	10	5 #8	11		1	4	7	7
A37	9	2	8 #11	11		4	4	7	7
A38	9	2	8 #12	5		4	4	8	1
A39	10	2	8 #9	0		9	0	8	8
A40	9	2	8 #10	10		1	4	7	6
A41	Str.	8	5 #6	4					
A42	4	4	3 #2						
A43	4	4	3 #10						
A44	4	4	4 #6						
A45	Str.	4	5 #2						
A46	6	4	5 #6	0	Wings-W1&W2	4	6	2	4
A47	Str.	32	6 #5	4	Rail-W1&W2				
A48	10	8	6 #7	5	Rail-W1&W2	7	5	7	2
A49	10	4	6 #5	0	Rail-W1&W2	5	0	4	11

Note: For Location of Sections B-B, C-C & C'-C' See Sheet No. 8

ESTIMATE OF QUANTITIES		
ITEM	UNIT	AMOUNT
Concrete Class 'A'	Cu.Yds.	71.0
Steel Reinforcement	Lbs.	5886.

ABUTMENT No. 2

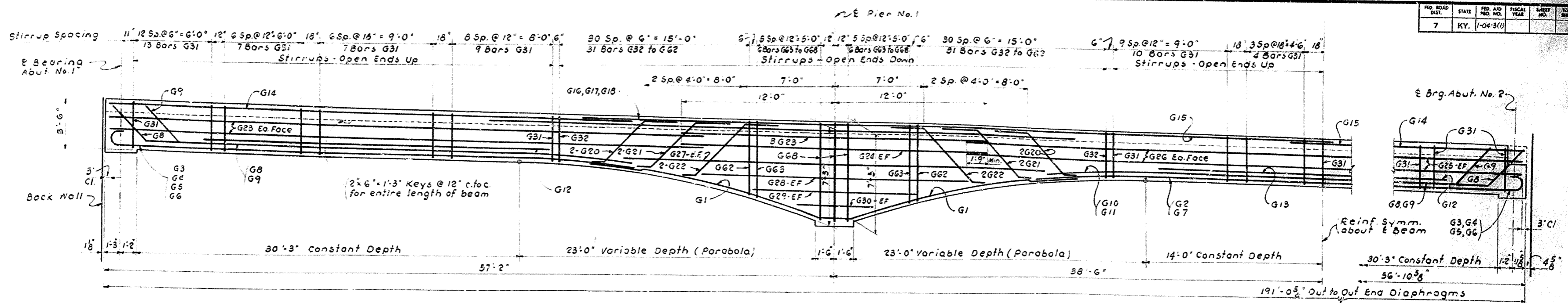
GUIST CREEK CROSSING (WESTBOUND ROW) Sheet 6

COMMONWEALTH OF KENTUCKY
 DEPARTMENT OF HIGHWAYS
 FRANKFORT
 COUNTY OF
 SHELBY
 LOUISVILLE - LEXINGTON

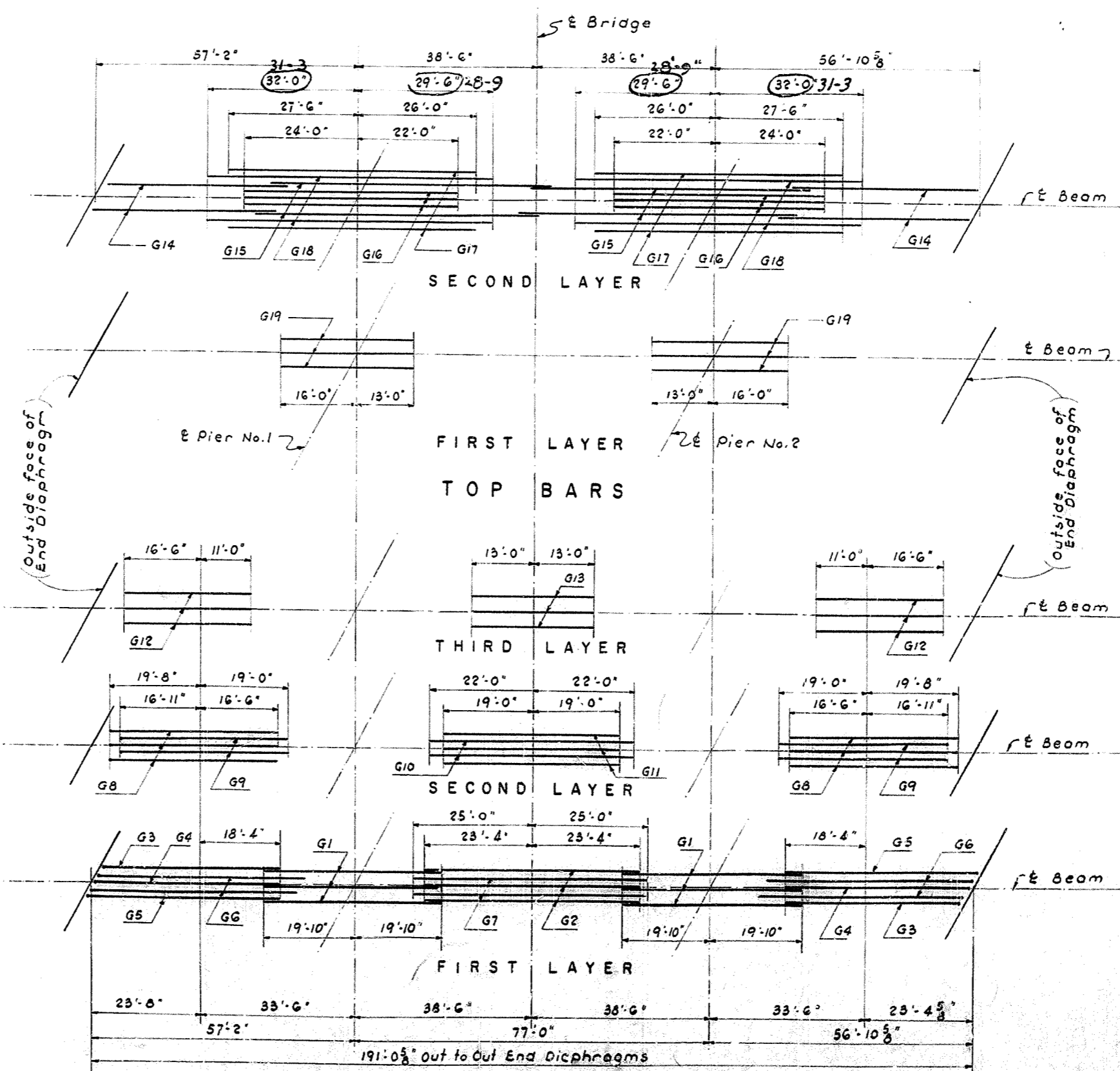
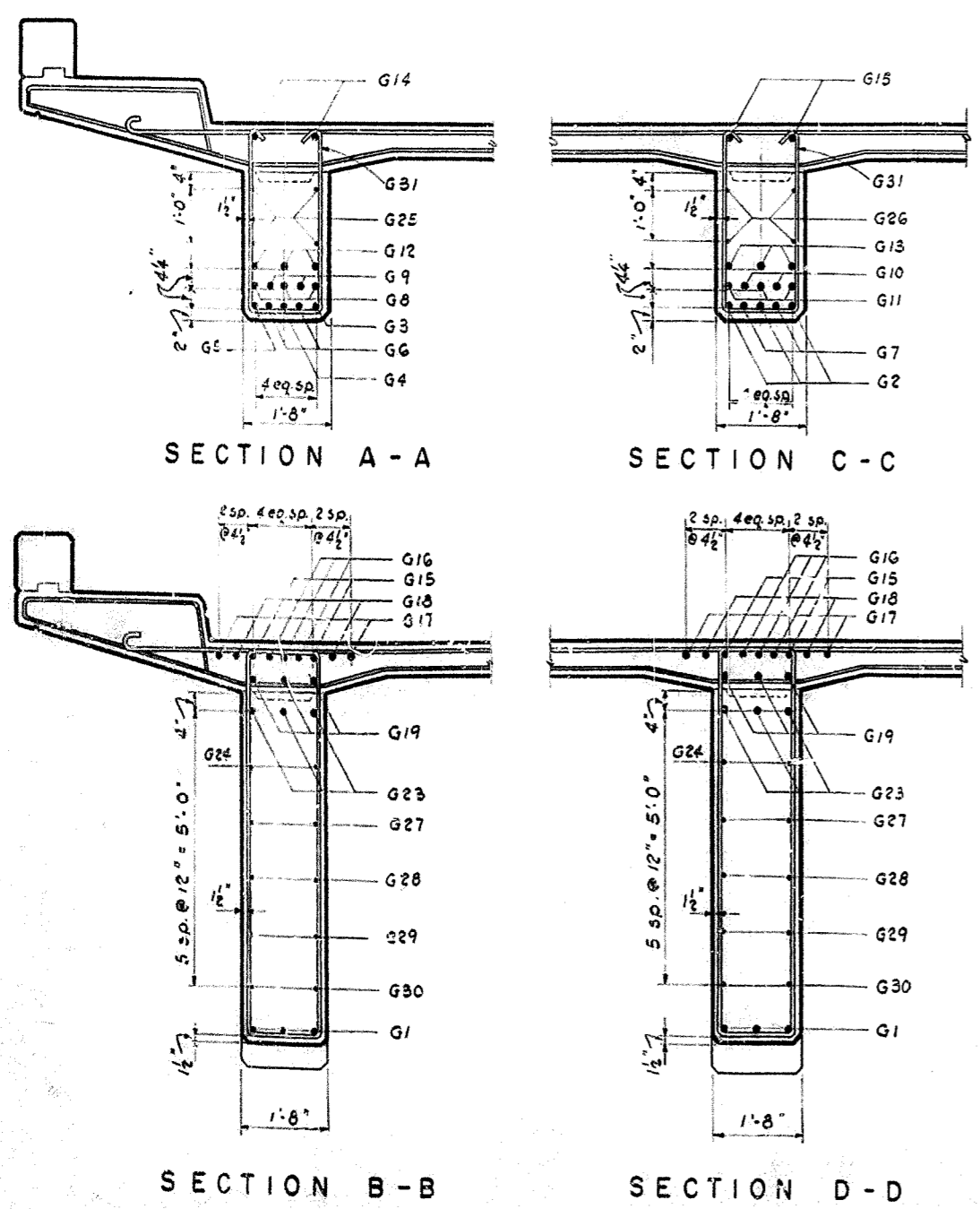
ROAD
 STATION 149+26.752 INTERSTATE PROJECT NO. 5R-106 006-LR

BRIDGE NUMBER
 DRAWING NO. 13797

FED. ROAD DIST.	STATE	FED. AID PROJ. NO.	FISCAL YEAR	SHEET NO.	TOTAL SHEETS
7	KY.	1-104-3(1)			



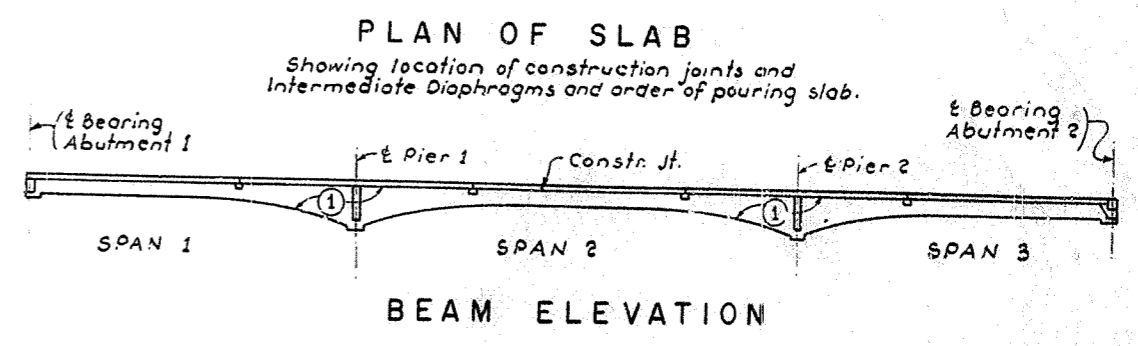
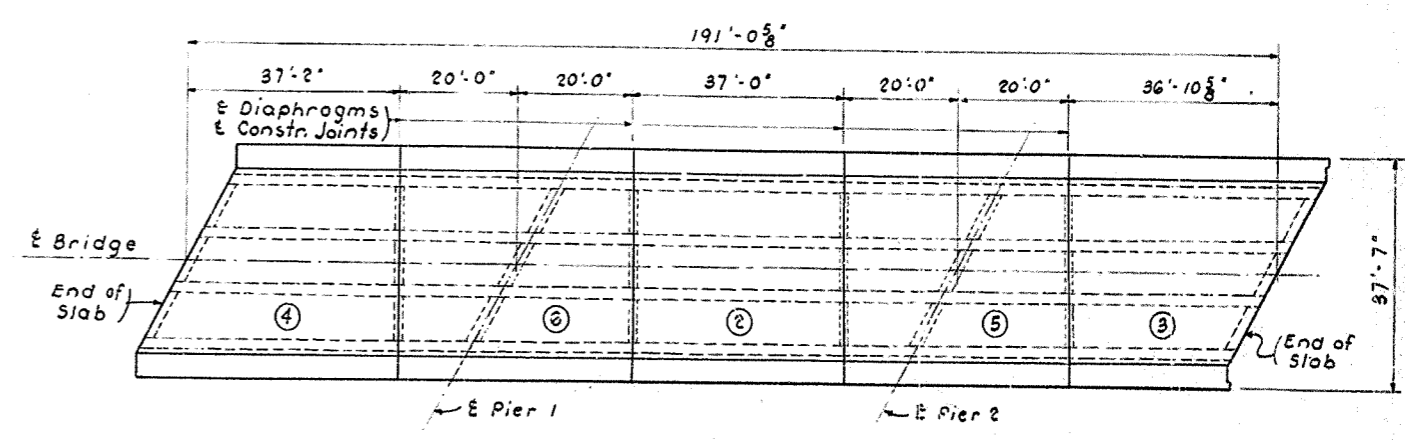
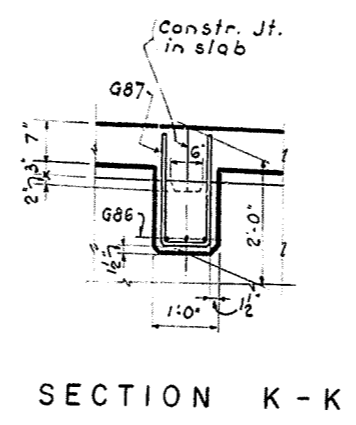
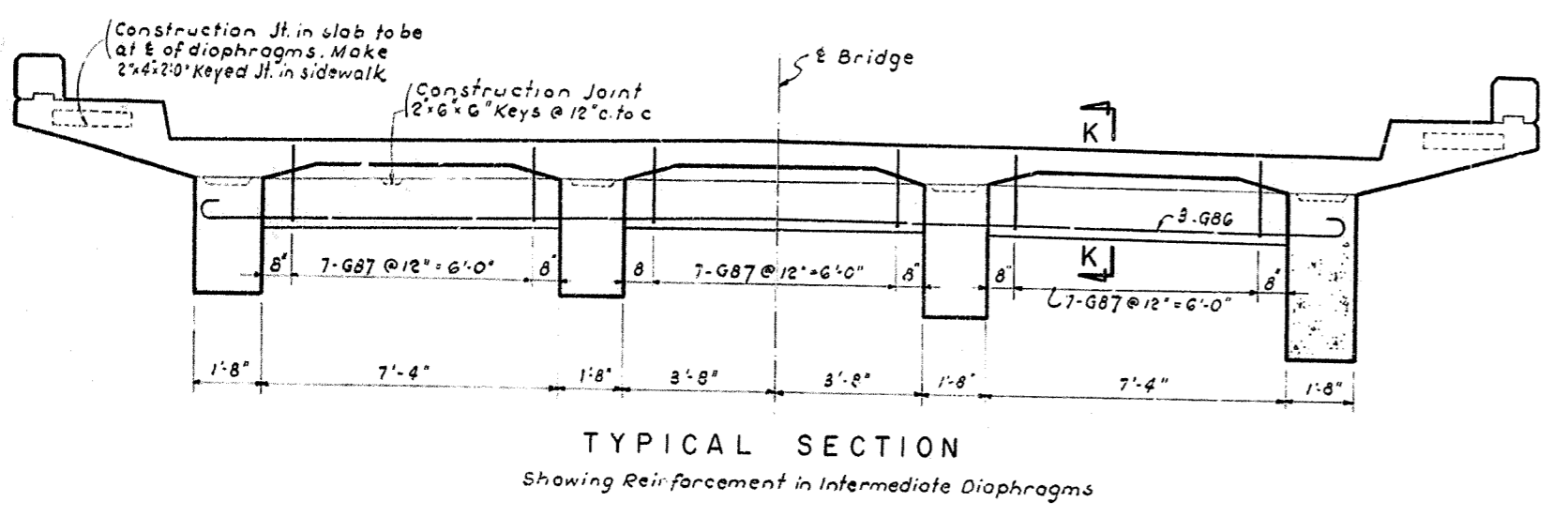
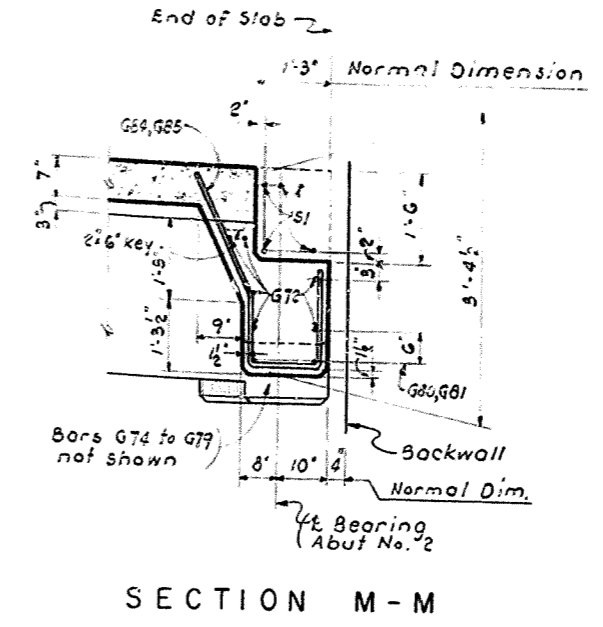
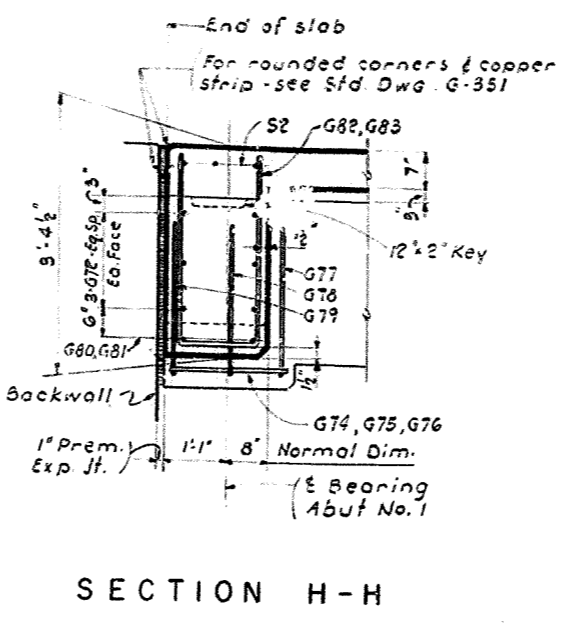
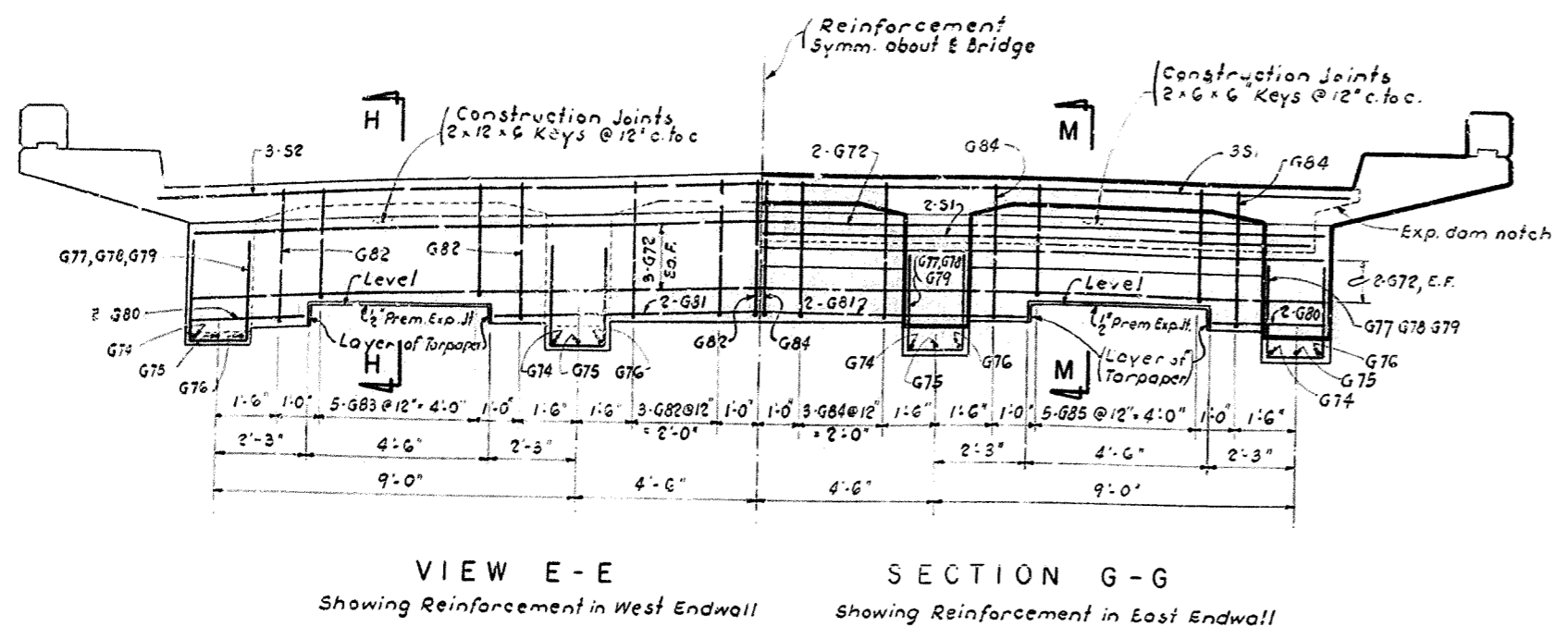
HALF SECTION ON E BEAM



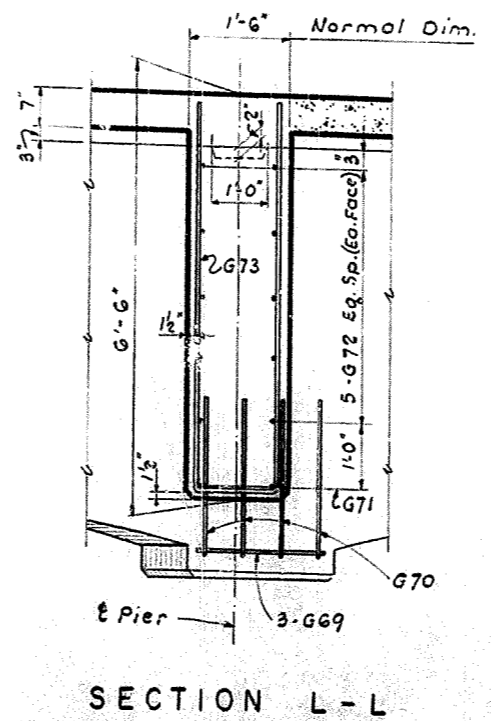
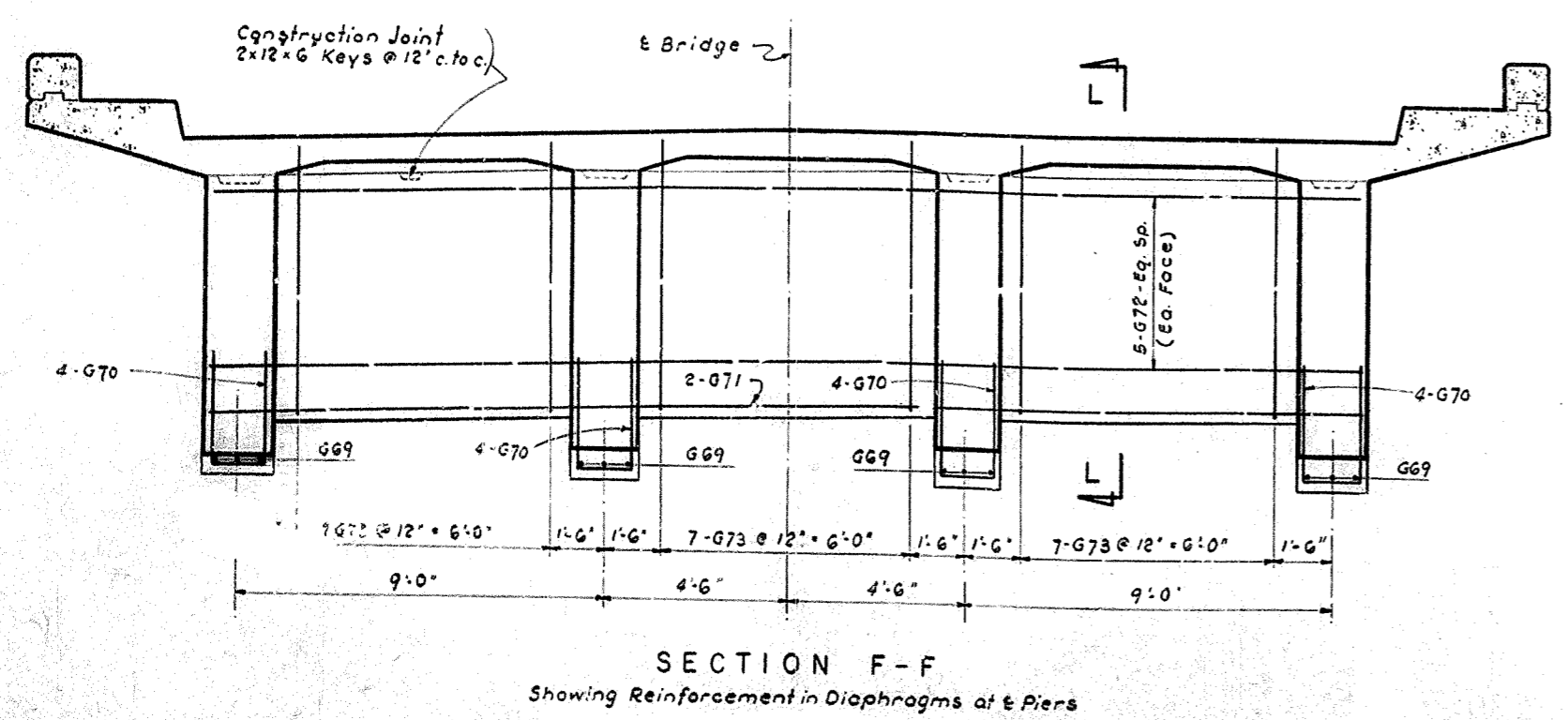
ARRANGEMENT OF BEAM REINFORCING SPANS 1, 2 & 3

5577
 CHECKED BY: M.E. DATE: 11/17/58
 DESIGNED BY: J.A.D. DATE: 11/17/58
 DRAWN BY: T.A.B. DATE: 11/17/58
 APPROVED BY: M.E. DATE: 11/17/58
 PROJECT: GUIST CREEK CROSSING (WESTBOUND RDWY.) SHEET 8

COMMONWEALTH OF KENTUCKY
 DEPARTMENT OF HIGHWAYS
 FRANKFORT
 COUNTY OF
 SHELBY
 LOUISVILLE - LEXINGTON
 ROAD
 STATION 199+26.754 INTERSTATE PROJECT NO. S.R-106-106-LR
 BRIDGE NUMBER 13797



Note:
Pour each beam in one continuous pour in horizontal layers.
Pour endwalls and diaphragms with beams by providing vertical keyed construction joints at & between beams.



DESIGNED BY: J.A.R. DATE: 11/1/58
 CHECKED BY: J.A.R. DATE: 11/1/58
 DRAWN BY: J.A.B. DATE: 11/1/58
 REVISIONS:

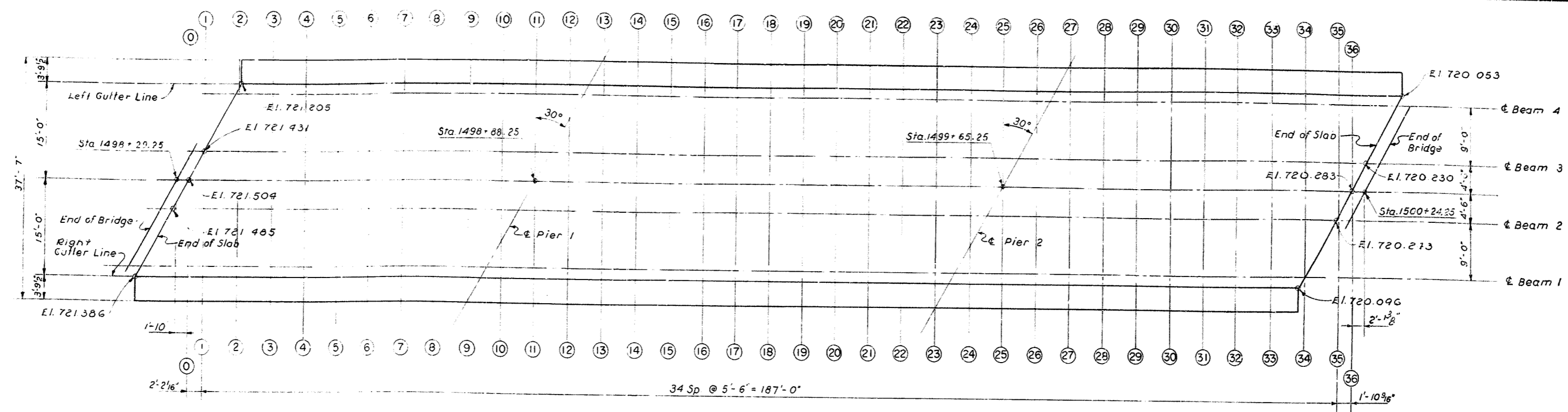
GUIST CREEK CROSSING (WESTBOUND RDWY.) Sheet 9

COMMONWEALTH OF KENTUCKY
 DEPARTMENT OF HIGHWAYS
 FRANKFORT
 COUNTY OF
 CHELBY
 LOUISVILLE - LEXINGTON

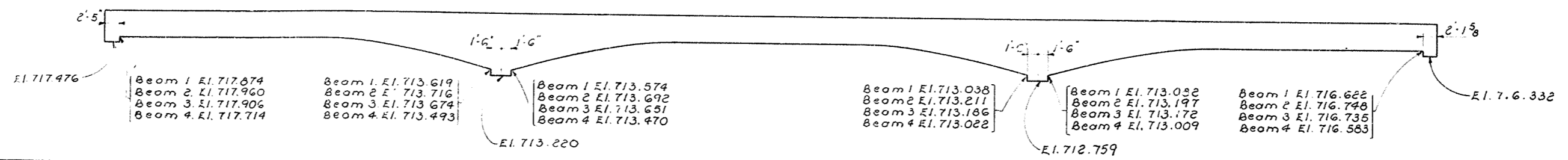
ROAD
 STATION 1499+26.75L INTERSTATE PROJECT NO. S.P. 06 306-1.2

BRIDGE NUMBER: 13797

SPANS 1, 2 & 3



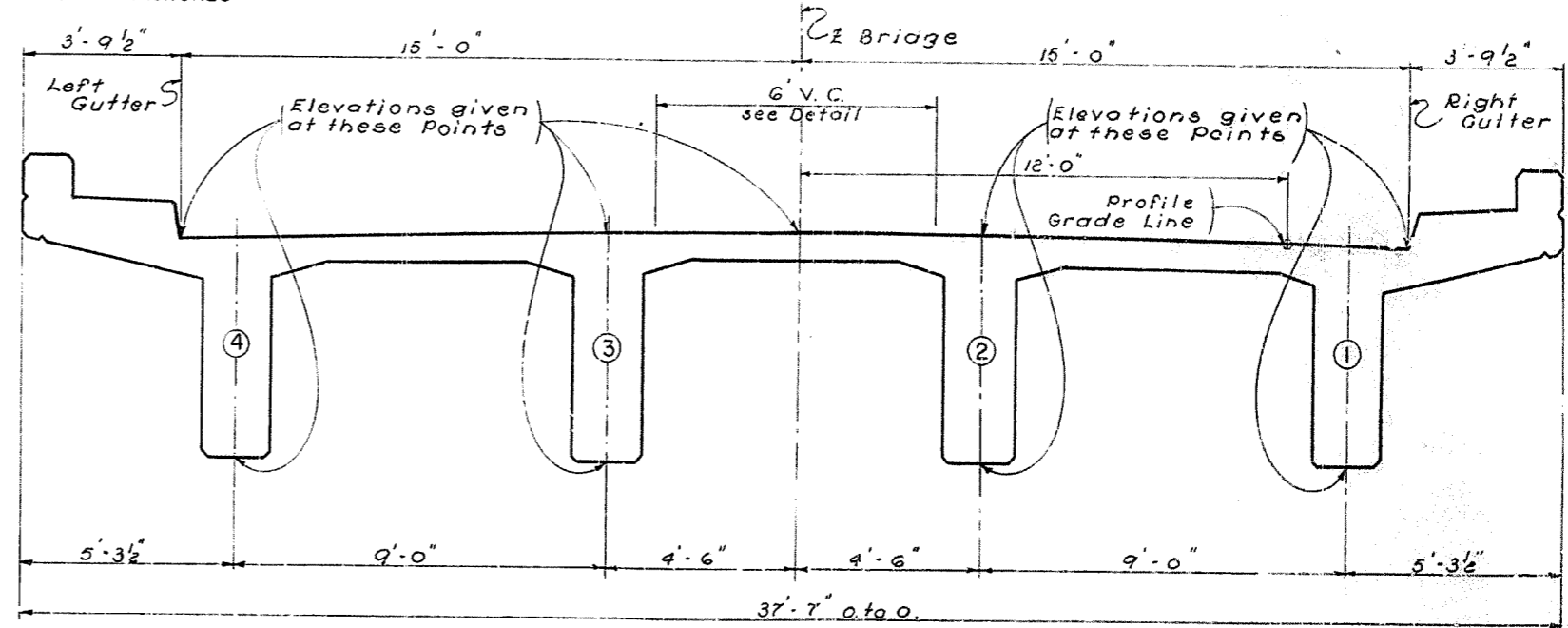
PLAN
SHOWING SECTIONS AND ELEVATIONS TOP OF SLAB ENDS



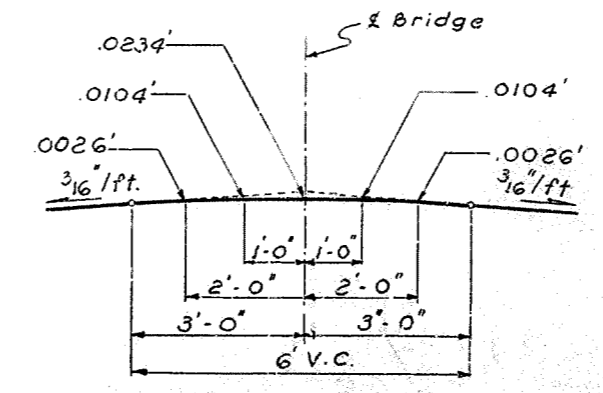
LONGITUDINAL SECTION ON C OF BEAMS
SHOWING ELEVATIONS AT HAUNCHES

LOCATION	TABLE OF CONSTRUCTION ELEVATIONS *									
	TOP OF SLAB AT GUTTER OVER BEAM 4	BOTTOM OF BEAM 4	C BEAM 3		TOP OF SLAB AT C BRIDGE	C BEAM 2		BOTTOM OF BEAM 1	TOP OF SLAB AT GUTTER OVER BEAM 1	
			TOP OF SLAB	BOTTOM OF BEAM		TOP OF SLAB	BOTTOM OF BEAM			
0+00					721.504	721.457	717.957	717.825	721.201	
0+01					721.483	721.439	717.939	717.813	721.209	
0+02	721.216	717.740	721.384	717.884	721.437	721.397	717.897	717.768	721.244	
0+03	721.164	717.684	721.345	717.845	721.398	721.351	717.851	717.715	721.191	
0+04	721.129	717.653	721.298	717.798	721.345	721.299	717.799	717.659	721.135	
0+05	721.084	717.608	721.247	717.747	721.293	721.233	717.743	717.599	721.075	
0+06	721.034	717.558	721.197	717.697	721.236	721.186	717.686	717.577	721.016	
0+07	720.982	717.506	721.136	717.636	721.179	721.129	717.645	716.732	720.959	
0+08	720.924	717.448	721.079	717.572	721.123	721.073	716.777	715.662	720.906	
0+09	720.870	717.163	721.026	716.683	721.071	721.023	715.683	14.169	720.859	
0+10	720.817	716.451	720.978	715.571	721.025	720.978	714.171	713.842	720.814	
0+11	720.769	715.315	720.933	714.032	720.980	720.933	714.032	715.316	720.770	
0+12	720.726	713.754	720.890	714.083	720.938	720.891	715.484	716.363	720.729	
0+13	720.684	713.996	720.849	715.512	720.897	720.851	716.508	716.989	720.696	
0+14	720.644	715.400	720.810	716.514	720.860	720.818	717.111	717.188	720.664	
0+15	720.606	716.379	720.778	717.130	720.828	720.785	717.285	717.156	720.632	
0+16	720.578	716.939	720.749	717.249	720.798	720.755	717.255	717.124	720.600	
0+17	720.550	717.074	720.718	717.218	720.767	720.723	717.223	717.087	720.563	
0+18	720.520	717.044	720.687	717.187	720.736	720.687	717.187	717.045	720.521	
0+19	720.493	717.017	720.653	717.153	720.697	720.643	717.148	717.003	720.479	
0+20	720.460	716.984	720.615	717.115	720.658	720.607	717.107	716.798	720.437	
0+21	720.421	716.945	720.577	717.077	720.618	720.568	716.884	716.169	720.396	
0+22	720.384	716.908	720.537	716.830	720.579	720.529	716.233	715.119	720.363	
0+23	720.345	716.638	720.499	716.156	720.545	720.497	715.162	713.642	720.352	
0+24	720.307	715.941	720.469	715.062	720.516	720.468	713.661	713.537	720.304	
0+25	720.278	714.824	720.441	713.540	720.488	720.441	713.540	714.813	720.277	
0+26	720.252	713.280	720.416	713.609	720.463	720.416	715.009	715.889	720.255	
0+27	720.227	713.527	720.391	715.054	720.439	720.394	716.051	716.530	720.237	
0+28	720.204	714.960	720.371	716.075	720.421	720.378	716.671	716.746	720.222	
0+29	720.186	715.959	720.356	716.672	720.406	720.363	716.863	716.735	720.209	
0+30	720.173	716.534	720.344	716.844	720.394	720.351	716.851	716.716	720.192	
0+31	720.161	716.685	720.331	716.831	720.381	720.334	716.834	716.695	720.171	
0+32	720.151	716.675	720.316	716.816	720.367	720.314	716.814	716.670	720.146	
0+33	720.137	716.661	720.297	716.797	720.343	720.289	716.789	716.636	720.112	
0+34	720.121	716.645	720.273	716.773	720.318	720.260	716.760			
0+35	720.096	716.620	720.245	716.745	720.288					
0+36	720.082	716.606	720.237	716.737	720.283					

* THESE ELEVATIONS CONTAIN CONSTRUCTION CAMBER AND MUST BE MAINTAINED WITH FALSEWORK IN PLACE.



CROSS SECTION
SHOWING POINTS AT WHICH ELEVATIONS ARE GIVEN



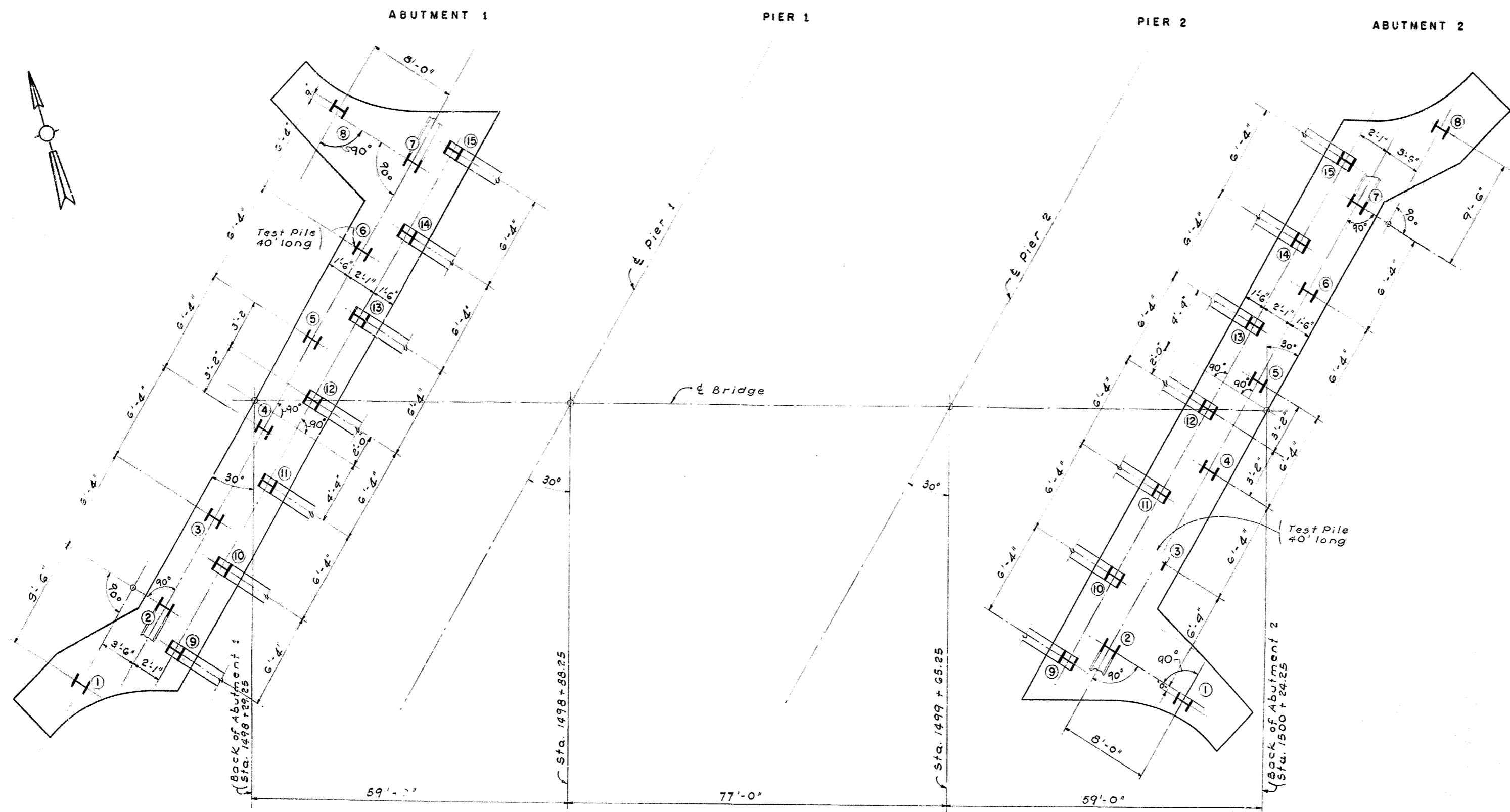
PARABOLIC CROWN
CONSTRUCTION ELEVATIONS

GUIST CREEK CROSSING (WESTBOUND ROW) Sheet 12

COMMONWEALTH OF KENTUCKY
DEPARTMENT OF HIGHWAYS
FRANKFORT
COUNTY OF
SHELBY
LOUISVILLE - LEXINGTON

ROAD
STATION 1499+26.75L INTERSTATE PROJECT NO. S.R.106-306-1.0

BRIDGE NUMBER
13797



PILE RECORD

PILE RECORD - 12" STEEL PILES AT 53#									
ABUTMENT 1					ABUTMENT 2				
PILE NO.	CUT-OFF ELEVATION AS SHOWN ON PLANS	TIP OF PILE ELEVATION AS DRIVEN	PILE LENGTH IN PLACE LIN. FT.	CALCULATED BEARING CAPACITY TONS	PILE NO.	CUT-OFF ELEVATION AS SHOWN ON PLANS	TIP OF PILE ELEVATION AS DRIVEN	PILE LENGTH IN PLACE LIN. FT.	CALCULATED BEARING CAPACITY TONS
1	714.320				1	713.176			
2	714.320				2	713.176			
3	714.320				3	713.176			
4	714.320				4	713.176			
5	714.320				5	713.176			
6	714.320				6	713.176			
7	714.320				7	713.176			
8	714.320				8	713.176			
9	714.320				9	713.176			
10	714.320				10	713.176			
11	714.320				11	713.176			
12	714.320				12	713.176			
13	714.320				13	713.176			
14	714.320				14	713.176			
15	714.320				15	713.176			

NOTE:
 This pile record does not replace other records of piles required to be kept and submitted by the Resident Engineer. After all piles have been driven, the Resident Engineer shall record the tip of pile elevation as driven, length of pile in place, and calculate the bearing capacity of each pile, and return one blue print copy of this sheet with this data to the Bridge Engineer to be recorded on original plans. Lengths of the piles in place shown hereon are the actual lengths of piles in the finished structure below cut-off elevation and is not necessarily the Pay Item.

DESIGNED BY: DATE: _____
 CHECKED BY: DATE: _____
 DRAWN BY: T.A.B. DATE: 1/17/58
 REVISIONS: _____

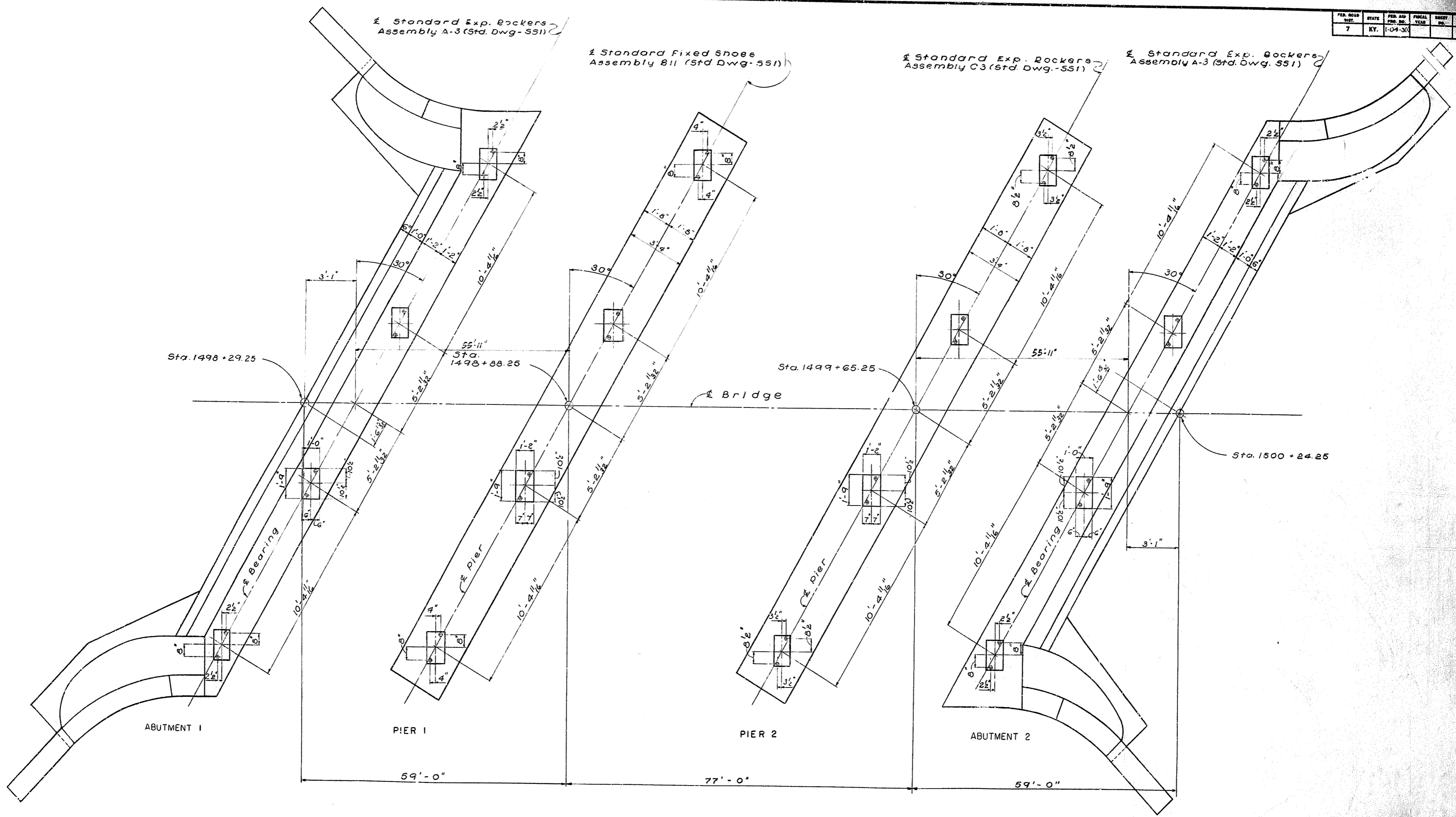
QUIST CREEK CROSSING (WESTBOUND RDWAY) Sheet 13

COMMONWEALTH OF KENTUCKY
 DEPARTMENT OF HIGHWAYS
 FRANKFORT
 COUNTY OF
 SHELBY
 LOUISVILLE - LEXINGTON

ROAD
 STATION 1498+26.75 INTERSTATE PROJECT NO. 5P 106-006-LB

BRIDGE NUMBER: _____ DRAWING NO. 13797

FED. ROAD DIST.	STATE	FED. AID PROJ. NO.	FISCAL YEAR	SHEET NO.	TOTAL SHEETS
7	KY.	1-0-4-30			



ANCHOR BOLT PLAN

DESIGNED BY	DATE	REVISION	DATE
CHECKED BY	DATE	REVISION	DATE
APPROVED BY	DATE	REVISION	DATE
DESIGNED BY	DATE	REVISION	DATE
CHECKED BY	DATE	REVISION	DATE
APPROVED BY	DATE	REVISION	DATE

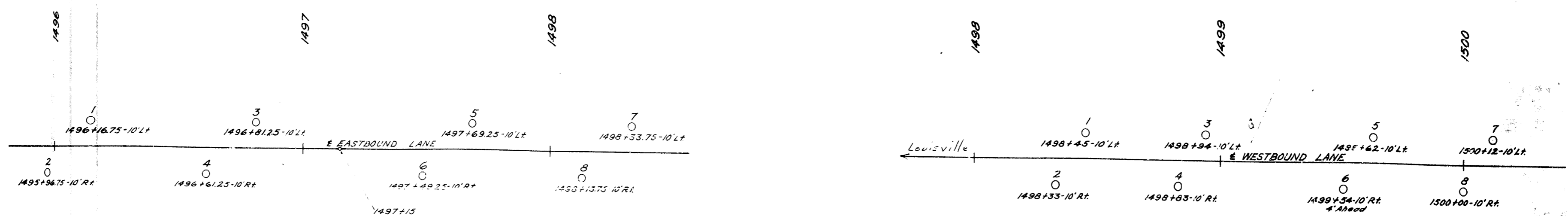
GUIST CREEK CROSSING (WESTBOURD ROW) Sheet 19

COMMONWEALTH OF KENTUCKY
 DEPARTMENT OF HIGHWAYS
 FRANKFORT
 COUNTY OF
 SHELBY
 LOUISVILLE - LEXINGTON

ROAD
 STATION 1499+29.25 INTERSTATE PROJECT NO. S.P. 106-106-1-2

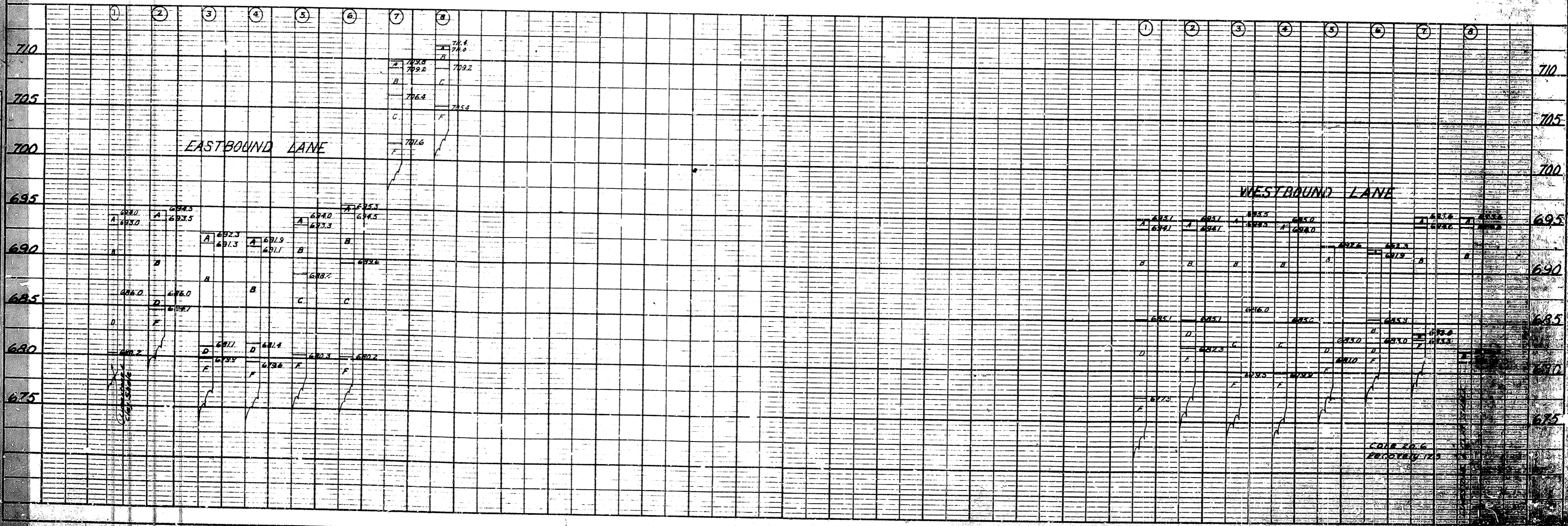
BRIDGE NUMBER
 DRAWING NO. 13797

SOUNDING LAYOUT



LEGEND
 A = Top Soil
 B = Yellow Sandy Clay
 C = Yellow Clay
 D = Blue Clay
 F = Limestone

SHELBY COUNTY
 U.S. 60 INTERSTATE S.P. 106-806-L 2
 GUIST CREEK BRIDGE
 SCALE: 1" = 20'



DATE
 BY
 CHECKED
 DRAWN
 PLANNED
 REVISIONS

DATE
 BY
 CHECKED
 DRAWN
 PLANNED
 REVISIONS